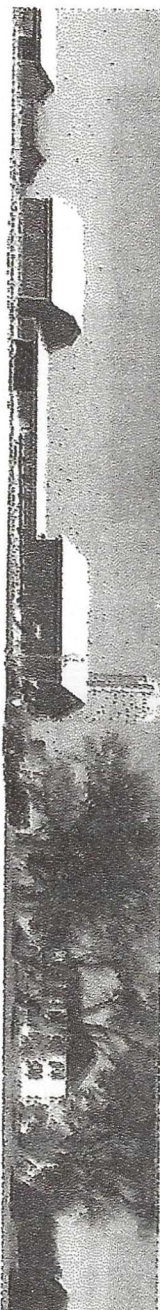


# CONSIDER COUNTY CENSUS COLLECTION

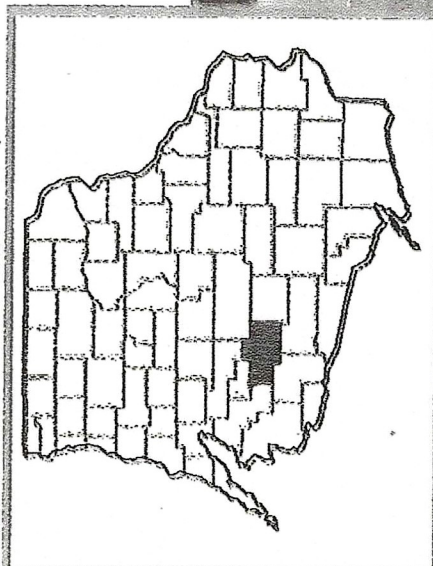
## 2022 CENSUS of Agriculture County Profile



### Langlade County Wisconsin

#### Total and Per Farm Overview, 2022 and change since 2017

	2022	% change since 2017
Number of farms	333	-23
Land in farms (acres)	109,487	-6
Average size of farm (acres)	329	+22
<b>Total</b>	<b>(\$)</b>	
Market value of products sold	145,670,000	+42
Government payments	387,000	-29
Farm-related income	2,337,000	+16
Total farm production expenses	113,992,000	+38
Net cash farm income	34,402,000	+55
<b>Per farm average</b>	<b>(\$)</b>	
Market value of products sold	437,448	+85
Government payments *	9,675	+148
Farm-related income *	13,585	+39
Total farm production expenses	342,319	+79
Net cash farm income	103,308	+101



#### 1 Percent of state agriculture sales

##### Share of Sales by Type (%)

Crops	58
Livestock, poultry, and products	42

##### Land in Farms by Use (acres)

Cropland	70,639
Pastureland	6,473
Woodland	26,860
Other	5,515

Acres irrigated: 23,005

21% of land in farms

##### Land Use Practices (% of farms)

No till	13
Reduced till	14
Intensive till	31
Cover crop	15